



GM RAILING® DOUBLE
PRODUCT REPORT

A photograph of a modern building with a glass facade, partially obscured by tree branches in the foreground. The building has a white horizontal band above the glass. The sky is blue with some clouds. The tree branches are green and leafy.

TABLE OF CONTENTS

Product description	S. 04
Dos and Don'ts	S. 06
Special advantages	S. 08
Assembly & Sealing	S. 10

KEY

A	falling down side
ad	adaptor
af	adjustment fitting
aj	adjustment
bb	balance base
br	bearing rail
bt	bearing track
ca	covering angle
cop	connection profile
cp	curved profil
cpc	covering profile clips
ct	c-track 28x28 mm
dbb	drainage building side
gb	full glass balustrade
hb	height balustrade
hr	handrail
ld	direction of load
p	GM point
rg	rubber gasket
scbs	steelconstruction building site
sp	shuttering profile
sr	support rail
uc	underconstruction profile
ucb	underconstruction bracket
v	walking site
ws	windowsill
d ¹	profile depth
dte	distance of edge
ffl	floor finish level
h ^{tot}	total height
h-of	horizontal offset
h ¹	height of glass stick out
h ²	profile height
h ³	height of handrail stick out
v-of	vertical offset

A photograph of a modern, multi-story building with a glass facade. The building features a series of vertical glass panels that create a rhythmic pattern. The sky is clear and blue, and there are green trees in the foreground and background. A red rectangular overlay is positioned in the lower-left corner, containing a table of contents.

TABLE OF CONTENTS

Product description	S. 04
Dos and Don'ts	S. 06
Special advantages	S. 08
Assembly & Sealing	S. 10

A photograph of a modern building with a glass facade. The building has multiple floors with large windows and a balcony on the upper floor with glass railings. The glass reflects the sky and surrounding trees. The text is overlaid on a semi-transparent white box in the upper right portion of the image.

GLAS MARTE COMPANY PROFILE

Innovative development, competent advice, detailed planning and accomplished execution – you will find all this at Glas Marte combined in a single operation.

Founded in 1930, the company has gradually expanded its knowledge about the versatile building material that is glass, and now offers a wide product range, starting with flat and insulating glass, a variety of surfaces, multi-award-winning sliding and holding systems as well as delicate glass partition wall systems, through to DIBt-tested glass railings. Whether for indoors or outdoors, in private or public buildings – the more complex the requirements, the more innovative and creative the idea, the better you will be taken care of by Glas Marte.

PRODUCT DESCRIPTION

GM RAILING® DOUBLE

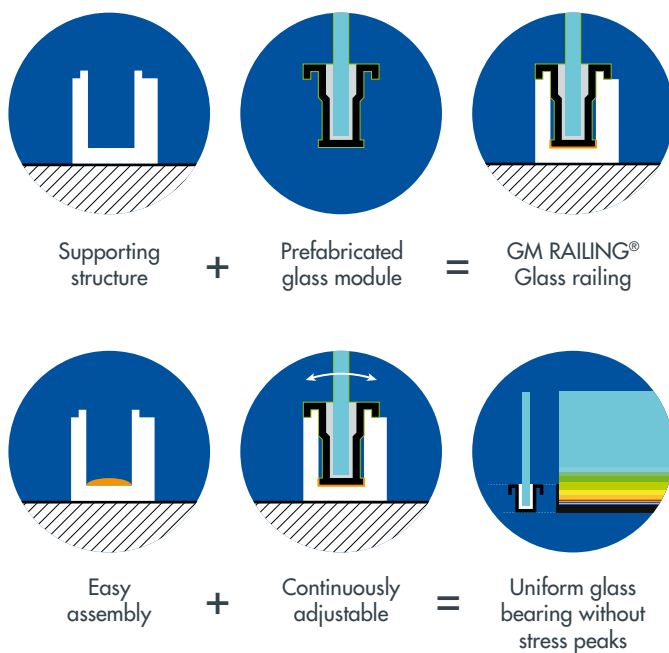
With the GM RAILING® DOUBLE glass railing system, Glas Marte combines the uniform, tension-free glass support of the GM RAILING® systems with the smallest and most compact U-profile.

By the U-profile and glass module interlocking on both sides, an extraordinary stability of the overall system is achieved. The force arising in case of loading is diverted into the substrate via both profile anchors, making the system twice as resilient.

GM RAILING® DOUBLE laminated safety glass is manufactured with the highly transparent PVB intermediate layer Trosifol® UltraClear from kuraray: As a customer, you benefit from very high edge stability and the lowest yellow value index (< 0.4) on the market with verified salt water spray test (results according to TÜV-Süd laboratory test in accordance with ASTM B 117). Sustainability, durability and brilliant colour fastness, especially in combination with float glass extra-white, are assured.

The protection against moisture is particularly innovative. By gluing over the whole area, water is unable to penetrate in the first place. Sealing levels, foils and sheeting can be optimally attached. A second sealing level can even be created optionally by means of a deflection profile.

The glass railing is optimised for connecting external façade claddings. Façade metal sheeting including joint connector sheeting, HPL façade panels, plasterboard panels and many more can be easily integrated. The glass modules can even be suspended once the façade cladding has been fitted.





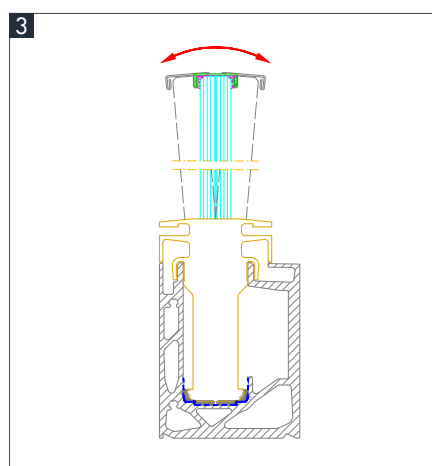
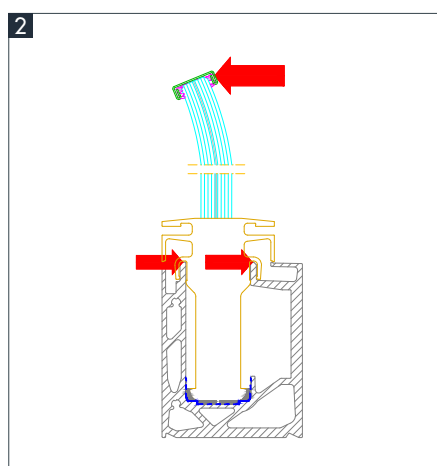
STANDARD-COMPLIANT DESIGN FOR GLASS RAILINGS

1

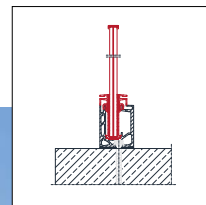
✓	DOS	✗	DON'TS
	CONSTRAINT-FREE BEARING Low-stress bearing DIN 18008-1 – 10.1.3 ON B 3716-1 – 6.2 SIGAB 002 – 5.3		FORCED STRESS Forced strain due to installation Wedges must not be used (local stresses)
	UNCHANGABLE POSITION STABILITY Position stability through destabilising effects EN 1990		CHANGE DUE TO USE Irreversible limit state of fitness for use due to, e.g., dirt (gravel ...) Indirect impacts from ice, snow and moisture influence the bearing conditions Environmental impacts with the effect on the durability of the supporting structure
	UNIFORM BEARING Avoidance of influences from the substructure on the glass railing, e.g. deformations DIN 18008-1 – 3.1.1 and 7.1.5 I ON B 3716-1 – 1		UNPLANNED STRESSES Local pressure points directly on the glass cause stress peaks and lead to glass breakage.

Our interpretation of standards and technical guidelines; no claim to being complete.

1. EXECUTION COMPLIANT WITH STANDARDS | 2. STATIC SYSTEM | 3. ADJUSTMENT RANGE







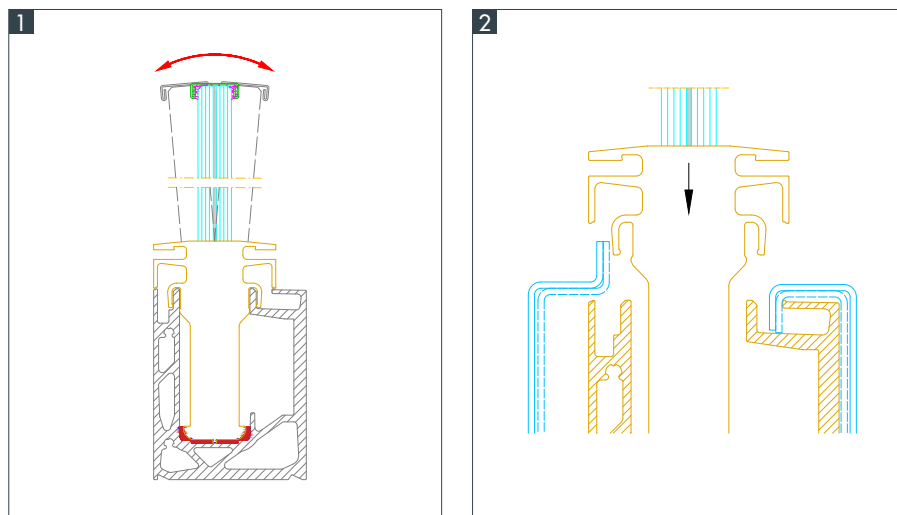
GM RAILING® DOUBLE

THE TWICE AS GOOD GLASS RAILING SYSTEM

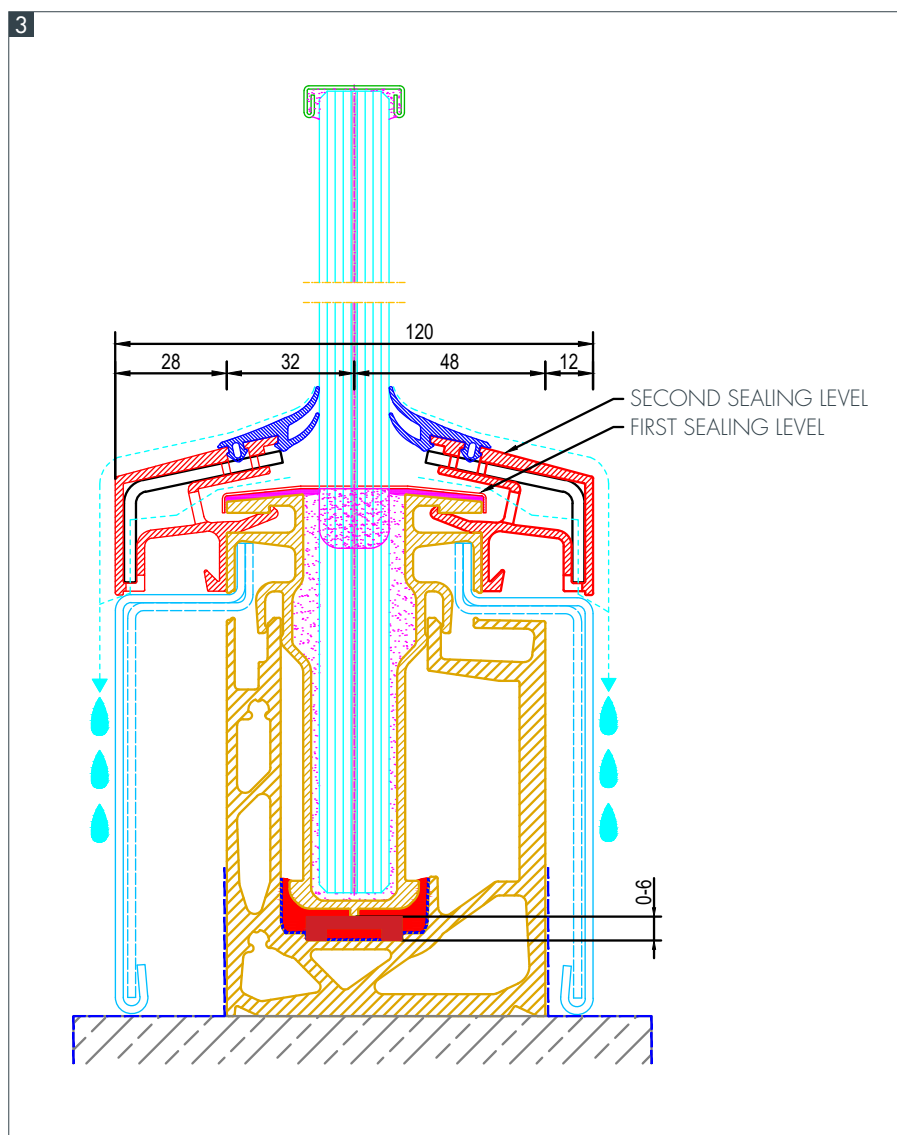
GM RAILING® DOUBLE is a very delicate glass railing system with optimal, uniform glass support. The prefabricated glass modules can be easily adjusted and are extremely robust.

The stability of the overall system is significantly increased by the structural bonding of the glass and profile. A simple, infinite adjustment and a perfect seal by means of a second sealing level as well as an optimal attachment of all types of sheeting and foils are what set GM RAILING® DOUBLE apart.

GM RAILING® DOUBLE SYSTEM-INTEGRATED SECOND SEALING LEVEL



1. FIXING & ADJUSTMENT | 2. ON-SITE METAL SHEETING | 3. CROSS-SECTION WITH DEFLECTION PROFILE





V20630

Subject to technical changes as well as printing and typesetting errors.
The listed products are protected by registered designs and patents.



Glas Marte GmbH | Brachsenweg 39 | 6900 Bregenz
+43 5574 6722-0 | office@glasmarte.at | glasmarte.at

