



GM CABINMART®

easy-to-clean, discrete,
timelessly modern.

Modular glass partitions
in the sanitary area



Content

- 3** Glas Marte presentation
- 5** Product advantages
- 7** Doors and partitions
- 11** With floor clearance
- 13** For children
- 15** Modular glass partitions with fittings, lock and hinge
- 17** Urinal and screening dividers
- 19** Product details
- 21** Design options
- 23** Technical support
- 27** Diverse product range
- 28** Contact



Glas Marte company building

When tradition comes together with innovation, a force emerges that has made Glas Marte, now in its third generation, one of Europe's leading glass specialists. Founded in 1930 and still family-owned and operated, Glas Marte currently has about 250 employees at the company headquarters in Bregenz, Austria. In addition to the domestic market of Vorarlberg and eastern Switzerland, Glas Marte also handles projects for customers throughout all of Europe.

Glass construction, glass processing and glass systems guarantee individual solutions at the highest technological level. Trend-setting developments in structural glass construction as well as solutions with the maximum possible glass applications and a minimal amount of necessary structural elements form the foundation for the success of Glas Marte. This advanced approach is protected by patented solutions and constant exchanges with international experts, universities and membership in the trade association for structural glass engineering.



GM CABINMART® - modular glass partitions in bathrooms. Aesthetics and functionality are no longer contradictory concepts.

Doors or partitions made of glass appear light and elegant due to their surface compactness and give the impression of transparency although they provide the perfect screen and ensure the highest level of protection.

GM CABINMART®

- WC partitions
- Shower partitions
- Washstands
- Urinal and screening dividers
- Changing cubicles

Ideally suited for the sanitary area in:

- Public institutions
 - _ Schools and universities
 - _ Kindergartens
 - _ Offices
 - _ Museums
 - _ Libraries
 - _ Hospitals and medical facilities
 - _ Fitness and sports facilities
- Commercial objects
- Hotels, restaurants and cafes



GM CABINMART®

product advantages

All product advantages at a glance

- Flush-mounted glass front
- No protruding fitting components
- Opaque design - joints between the glass panels covered by the internal fitting strip
- Visual marking "Vacant - Engaged", on the outside as well as on the inside
- Robust, durable construction
- Quickly and flexibly assembled
- The glass panels can be enamelled, printed, etched or processed in any other form
- Individual motif print possible
- Easy and fast to clean





GM CABINMART®

doors and partitions

When it comes to aesthetics, everything depends on the design principle - a decisive factor is whether only one partition is present or an architecturally appropriate spatial element with well-thought-out functions is required.

The two essential details include the mounting and the locking unit. The less there is to see of the mounting, the lighter and more elegant the doors and walls look.

It does not look like a stabilizing element, but like the logical ending of the glass surface. Furthermore, visually disruptive

fittings are integrated into the glass edge profiles. Safety is also a factor that GM CABINMART® has thought of. The fact that there are no glass-weakening cut-outs or drill holes in the glass causing structural stress considerably reduces the risk of the glass breaking.





GM CABINMART®

doors and partitions

The locking unit is intelligent in more ways than one.

➤ **First of all**, on the outside there are no attachments, mountings or handles because the locking unit is located on the inside.

➤ **Secondly**, the door mountings are designed such that the gaps between the glass panelling is covered by the mounting strip, making the design opaque.

➤ **Thirdly**, the locking unit has two functions - the knob cannot be turned until the doors are completely closed and only then will the bolts go all the way in. This prevents the bolt from getting stripped on the floor when the doors open or close.

➤ **Fourth**, the mounting indicates from the outside as well as the inside whether the toilet is occupied or not - when the knob is turned, the display, which is integrated into the mounting strip, changes from green to red.





GM CABINMART® with floor clearance

GM CABINMART® with variable
floor clearance on feet.

The walls of the individual cubicles are not directly installed on the floor, but on feet. The innovative foot design made of stainless steel is adjustable in height, invisibly fastened in the floor and adjustable to a possibly existing inclination of the floor.

With the variable adjustability in height, on the one hand, a practical distance results for cleaning purposes, and on the other hand, also improved privacy with the reduced floor clearance.

Floor clearance:

- Height: 155 mm ± 6 mm
- Drilling means: can be offset by ± 3 mm





GM CABINMART® for children

GM CABINMART® for children - flexibly and comprehensively adjusted to the requirements of the respective age group for very easy use with high safety and stability.

Playful design options of the modular glass partitions with colours and motifs considering child-oriented ergonomics offer children a friendly and lively atmosphere in the sanitary area of kindergartens, schools, sports facilities, campsites etc.

GM CABINMART® combines first-class quality with the high safety standard required in this area. Easiest care, a robust construction and attractive colour concepts play a decisive role in usability.





Modular glass partitions with fittings, lock and hinge

Glas Marte offers you most different types of fittings, which excel with highest functionality, high-quality materials and innovative ideas.

Fitting solutions made of stainless steel or aluminium, respectively, offer a multitude of contemporary options for application in the sanitary area and respectively highlight the aesthetic character of the glass. The required fastening modules are mounted at the glass and provide for an elegant appearance.





GM CABINMART®

urinal and screening dividers

GM CABINMART® also offers a solution for the separation between urinals or between shower spaces, respectively. These not only serve privacy, but also as spray-water protection. The fixtures of the urinal dividers are designed matching the cubicles.

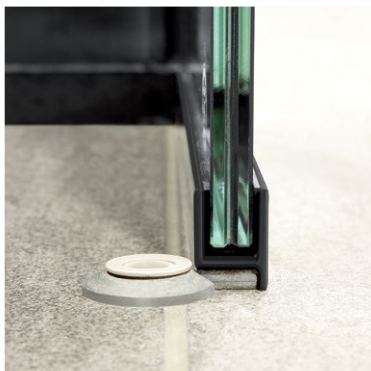
Especially for urinal dividers, glass is the ideal material. It is easy and uncomplicated to clean and therewith complies with all hygiene demands. Urinal dividers in special dimensions with and without floor clearance can also be realised. With the glass panels used, beside the basic types, any design options are open. The glass panels can be enamelled, printed, etched or processed in any other form.



**VIEWING WINDOW INSIDE WITH KNOB
AND RUBBER STOPPER**



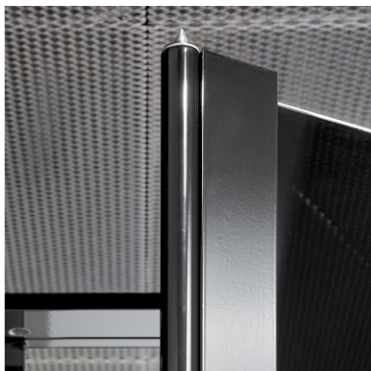
**VIEW WINDOW OUTSIDE WITH
EMERGENCY OPENING**



LOCKING SOCKET, BOTTOM



LOCKING SOCKET, TOP



**DOOR PROFILE, WITH LOCK
ON THE INSIDE**



**FRAME PROFILE WITH 12 MM
OF VISIBLE SURFACE**



CLOTHING HOOK



GM CABINMART®

product details

All product details at a glance

- **Type of glass:** toughened safety glass (TSG) or laminated safety glass (LSG) or of partially tempered glass (PTG)
- **Glass thickness:** 8 or 10 mm
- **Glass design with:**
 - _ Photo print, screen print, digital print, Satinato, matt or colour film etc.
 - _ ICE-H® structured glass, ornamental glass etc.
- Visible glass edges polished
- **Surface aluminium profiles - Door and frame profiles:** EV1 natural anodised or RAL powder-coated, as requested
- Fitting components are integrated into the glass edge profiles
- Upper bracing using aluminium profiles with only 12 mm of visible surface
- **Design variants door:**
 - _ Opening towards the inside or towards the outside
 - _ Door optionally self-closing
 - _ Partition wall depth variable
 - _ With or without vertical handle bar
- Variable module and door widths or heights
- Room-height design with skylight glazing

We would be delighted to advise you on your individual ideas.





GM CABINMART®

unlimited design options

Glass is a material can be used to create many diverse designs. This opens up completely new options for accentuating the wall area in bathroom cubicles and public restrooms. In addition to light cleaning and the excellent durability of glass wall paneling, this is a further advantage and a convincing argument for GM CABINMART®.

In addition to all RAL colors that can be used to enamel glass, new printing processes are the key to an almost unlimited design world. Any motif is feasible – regardless of fonts or images. In addition, adhesives, etching or other mechanical treatments such as sandblasting have become standard in the meantime.

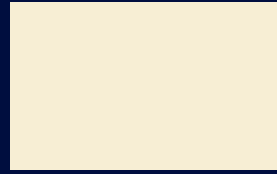
Colour collection - screen print



Beige 1001



Signal yellow 1003



Ivory 1014



Ruby red 3003



Traffic purple 4006



Ultramarine blue 5002



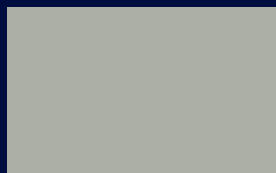
Light-blue 5012



Leaf green 6002



White-green 6019



Moss grey 7003



Copper brown 8004

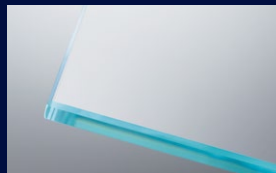


Orange-brown 8023

Glass collection - ESG SECURMART®



Float glass



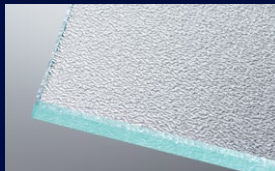
Float glass, extra-white



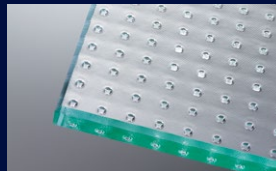
Satinato



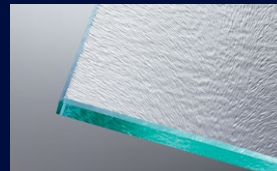
Satinato, extra-white



Ornament Listral 200



Mastercarre



Chinchilla



ICE-H®

Aluminium surfaces



EV1 natural anodised



RAL powder-coated,
as requested

Here, a few exemplary options, which design variants are possible with GM CABINMART®. Further design variants and glasses available on request. We would be delighted to advise you on your individual ideas.

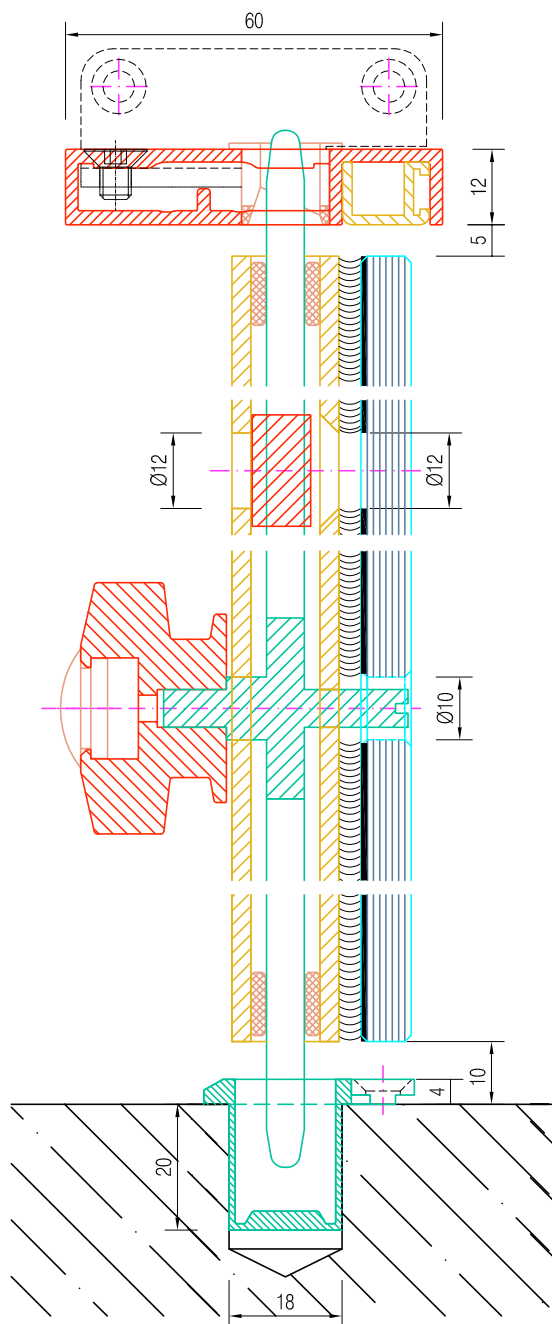


GM CABINMART®

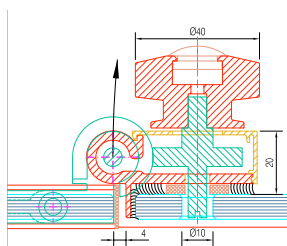
technical support

Along with a first class product comes first-class service. For GM CABINMART®, this means: We provide you with comprehensive performance descriptions, we consult with you on the design, we handle the planning details and, of course, organize installation.

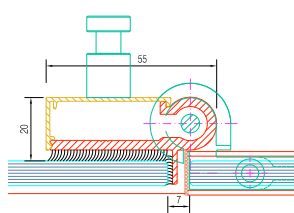
Like all of our products and solutions, GM CABINMART® has been put through its paces in comprehensive tests in our labs. Our technicians are happy to share this knowhow with our customers and support them in all aspects of the project, from the bidding phase to additional accessories, like toilet paper roll holder. When it comes to design options, our specialists enjoy a challenge and are happy to consult with you on all options.



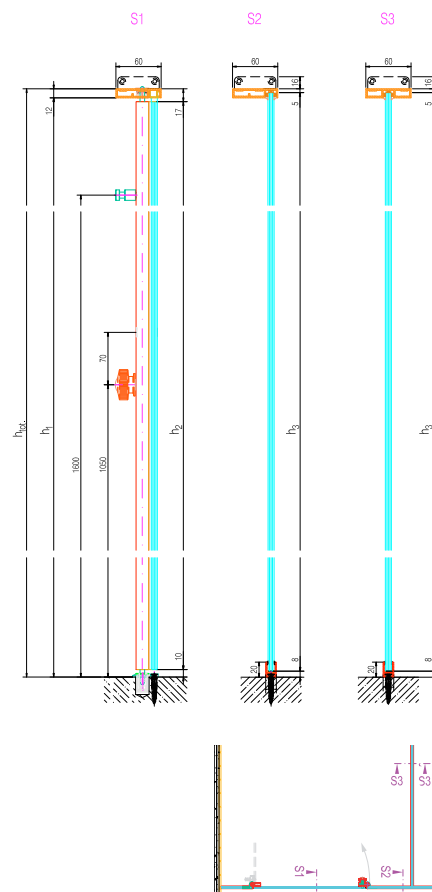
Locking



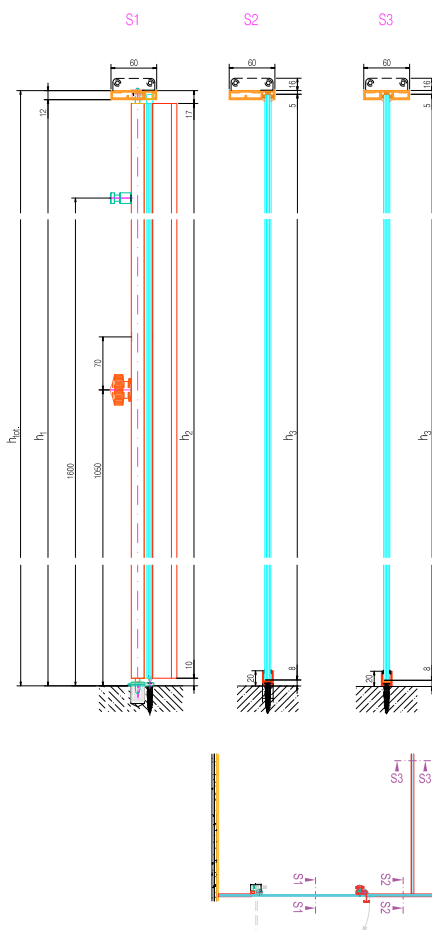
Horizontal section of lock and knob



Horizontal section of hinge and clothing hook



Narrow door opening to the inside



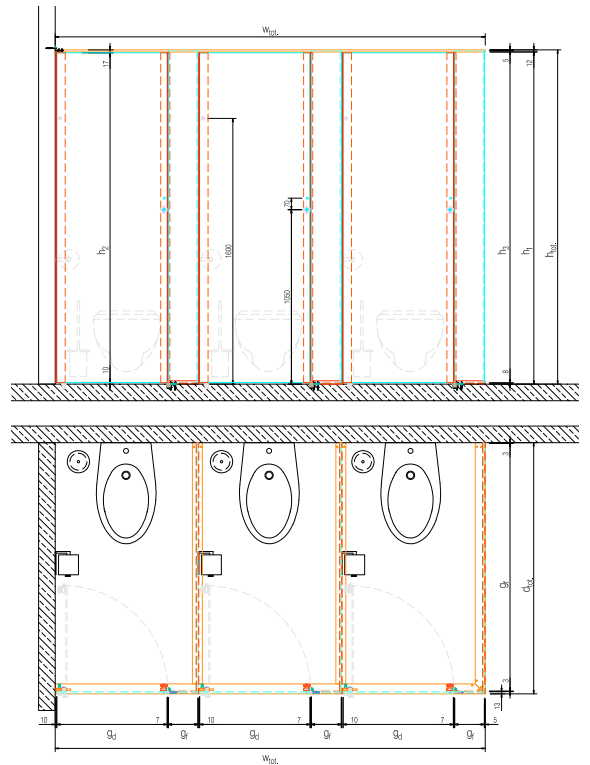
Narrow door opening to the outside

Drawing not to scale
Downloads on www.glas Marte.at

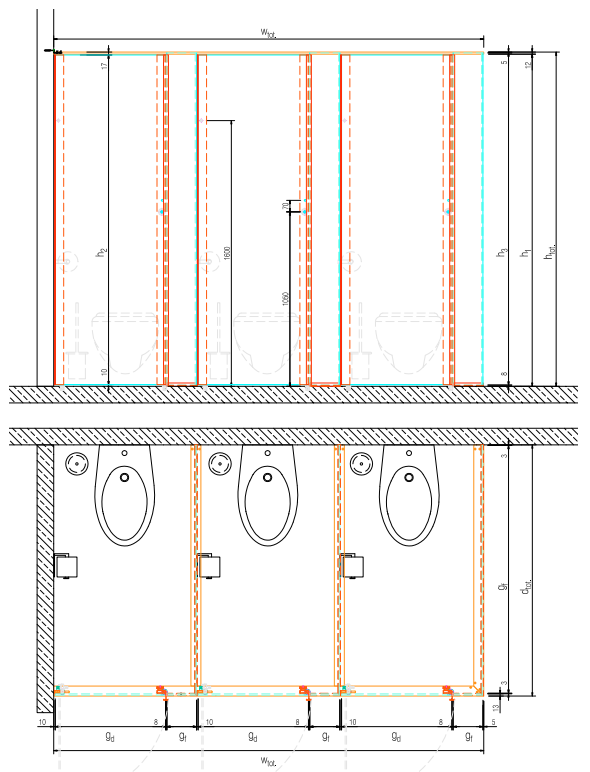
* Feasibility partially depending on the combination of requirements, individual length of the handle bar

Subject to technical modifications.

B Wide door, opening towards the inside*



D Wide door, opening towards the outside, with vertical handle bar*



glasmarte . GM CABINMART® 25





Diverse product range

Additional information about products in the areas of glass construction, glass construction modules, GM RAILING® and workshops are available by mail.

Please use the service area on our homepage www.glasmarTE.at, or send us an e-mail to glasbau@glasmarTE.at.



Glas Marte GmbH
Glasbaumodule
Brachsenweg 39
6900 Bregenz, Austria
Phone +43 (0)5574 6722
Fax +43 (0)5574 6722-540
glasbau@glasmarte.at
www.glasmarte.at

