

**GM FRAME PROFILES**  
PRODUCT REPORT



## CONTENTS

INTRODUCTION	P. 04
PRODUCT OVERVIEW	P. 06
PRACTICAL APPLICATION	P. 08
DESIGN OPTIONS/GLASS	P. 10



A photograph of a modern building with a glass facade, featuring large windows and a dark frame. A tree is visible in the foreground on the left side. The image is used as a background for the company profile text.

## GLAS MARTE COMPANY PROFILE

Innovative development, competent advice, detailed planning and masterful execution – Glas Marte has it all.

Founded in 1930, the company has continually expanded its expertise of working with glass, a versatile building material, and today offers a wide range of products, from flat and insulating glass to a variety of surfaces, multi-award-winning sliding and holding systems as well as delicate glass partition wall systems all the way to DIBt-tested glass railings. Whether indoors or outdoors, in private or public buildings – the more complex the requirements, the more innovative and creative the concept, the more you are in good hands with Glas Marte.



More information  
on GM FRAME PROFILES

## GM GLASS PARTITION WALL SYSTEMS – UNPARALLELED AESTHETICS EFFICIENT PLANNING AND SIMPLE ASSEMBLY

The glass room dividers by Glas Marte are the perfect choice for situations in which privacy needs to go hand in hand with openness and light. Your design wishes know no bounds thanks to the many ways in which GM FRAME PROFILES can be combined.

Exceptionally slim profile cross-sections, reduced to their essential functionality, allow the glass to take centre stage. Perfectly shaped, elegant material joints and delicate connections with adjacent components emphasise the technical sophistication of the profile cross-section.

Doors and fittings can be discreetly integrated into the wall without edges, corners or projections. The slender silhouette of the overall construction is completely upheld.

### ADVANTAGES OF GM FRAME PROFILES

- » **THE MOST DELICATE**  
Minimum visible widths for superior aesthetics
- » **THE MOST STABLE**  
Continually developed profile cross-sections for maximum stability
- » **THE MOST VERSATILE**  
Unrestricted design freedom
- » **THE MOST FUNCTIONAL**  
From individual systems to large-scale installations
- » **THE EASIEST**  
Fast, efficient assembly due to dry glazing







## PRODUCT OVERVIEW

### GM FRAME PROFILES

STANDING

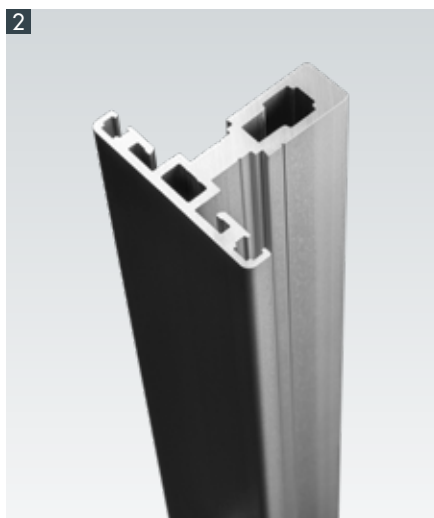
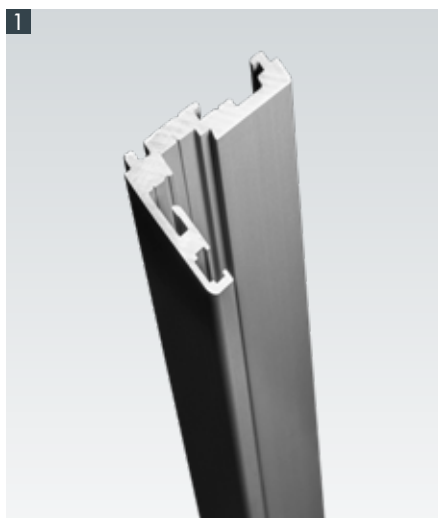
INTERIOR

#### GM FRAME PROFILES

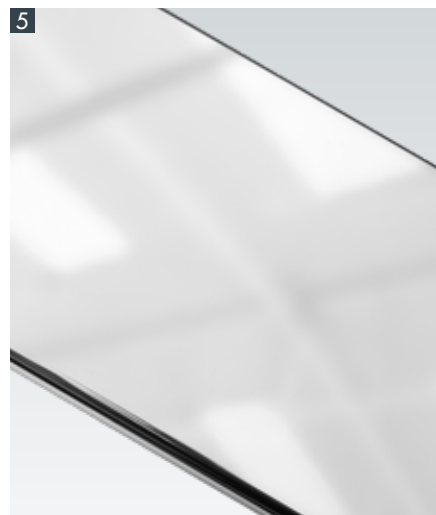
THE OPTIMAL SOLUTION FOR GLASS PARTITION WALLS

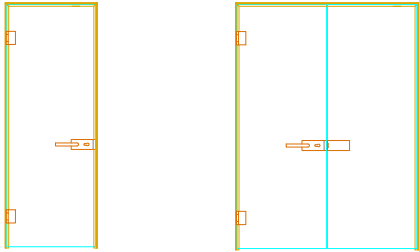
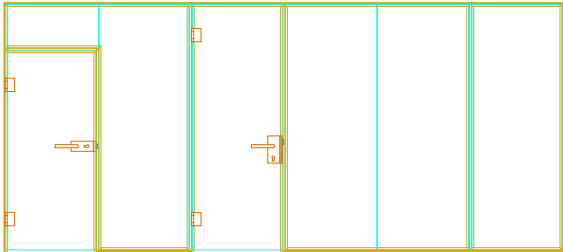
For reveal doors or large-scale installations

8 mm toughened safety glass to 16.2 mm laminated safety glass



1 L FRAME | 2 T FRAME | 3 SURFACE: EV1 | 4 SURFACE: SIMILAR TO NIRO MATT | 5 SURFACE: CHROME



INSTALLATION IN REVEAL	LARGE-SCALE PROJECTS
	



**6** GM LOCK «OFFICE» | **7** GM LOCK «STUDIO» | **8** GM FRAME HINGE ROUND | **9** GM FRAME STRIP ANGULAR

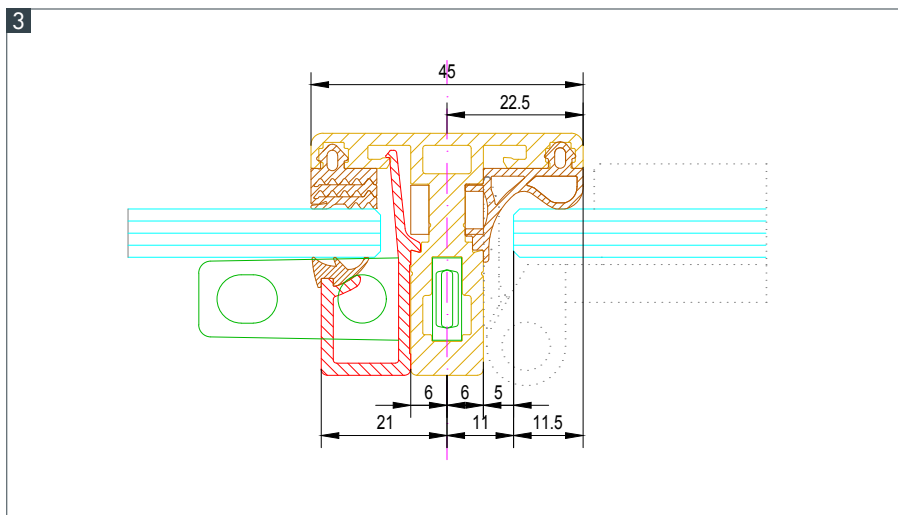




More information  
on GM FRAME PROFILES



1 GM FRAME HINGE | 2 GM LOCK «OFFICE» | 3 T FRAME (CROSS SECTION)







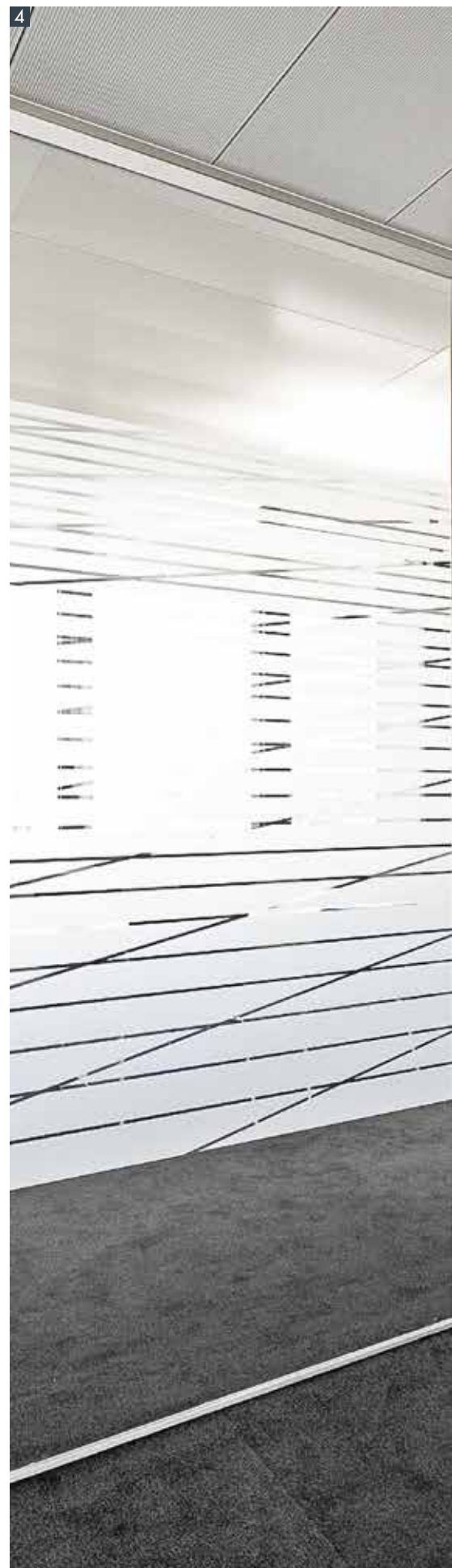
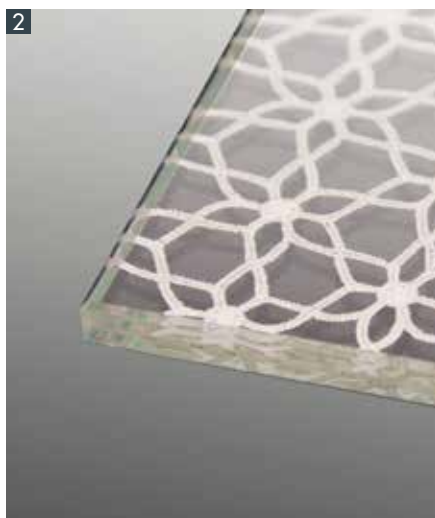
## GM FRAME PROFILES

### DELICATE, STABLE AND FUNCTIONAL

The GM FRAME PROFILES skilfully showcase the glass. The perfectly matched profiles enable an unrivalled combination of stability and aesthetics thanks to the intelligent cross-section design. Doors, fixed glazing and skylights can be optimally combined according to project-related requirements. It is possible to create glass partition walls according to the highest architectural demands by seamlessly integrating all components into the wall design.



More information  
on GM FRAME PROFILES



1 GM ICE-H® | 2 GM LAMIMARTEX® | 3 GM SATINATO® | 4 GM PRINTMART®





## **SURFACE TREATMENT**

### UNIQUE EFFECT

Glass can be ultra-smooth. But it doesn't have to be. Glass Marte has developed and refined various surface treatment methods ranging from complex sandblasting to several types of printing to the production of textured glass to the incorporation of the finest embroideries within the glass.



