



GM PAVILLON360
PRODUCT REPORT



A photograph of a modern building with a glass facade, featuring large windows and a dark frame. The building is partially obscured by a semi-transparent white box containing text. The background shows a clear blue sky and some greenery on the left.

GLAS MARTE COMPANY PROFILE

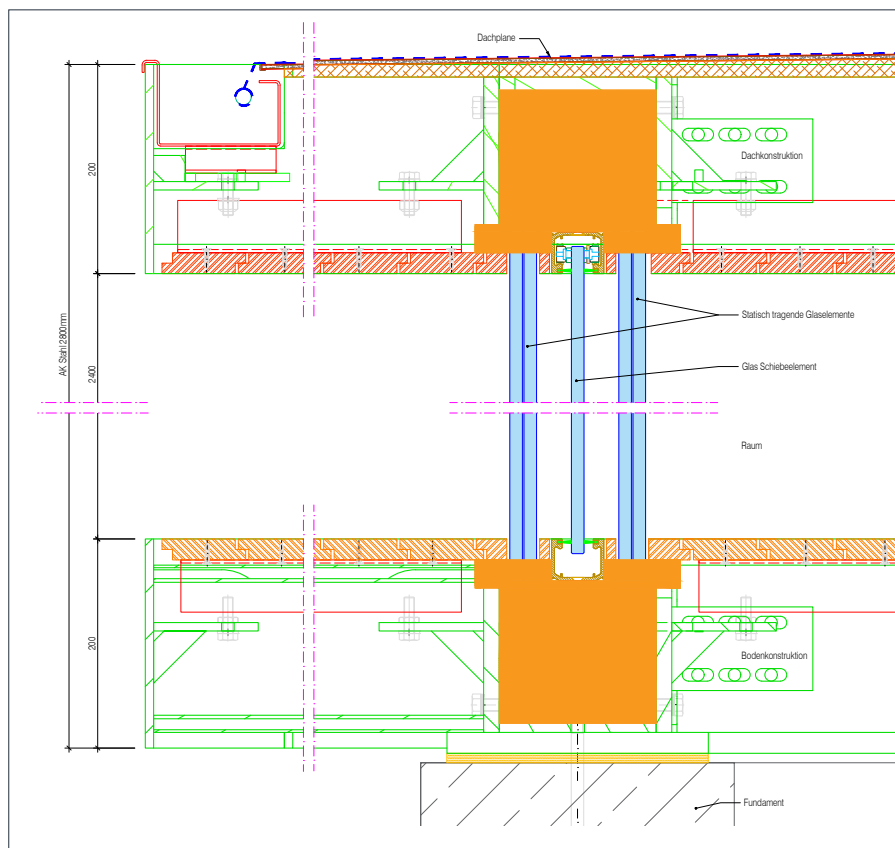
Innovative development, competent advice, detailed planning and masterful execution – you will find all this united under the umbrella of Glas Marte.

Founded in 1930, the company has successively expanded its knowledge of the versatile building material glass and today offers a wide range of products, from flat and insulating glass to a wide variety of surfaces and award-winning sliding and holding systems as well as DIBt-tested glass railings. Whether indoors or outdoors, in private or public buildings – the more complex the requirements, the more innovative and creative the concept, the more you are in good hands with Glas Marte.



reddot design award
honourable mention

DETAIL INVISIBLE RAIL-FIXING OF GLAZING TO FLOOR AND ROOF





ELEGANCE ENTIRELY MADE OF GLASS

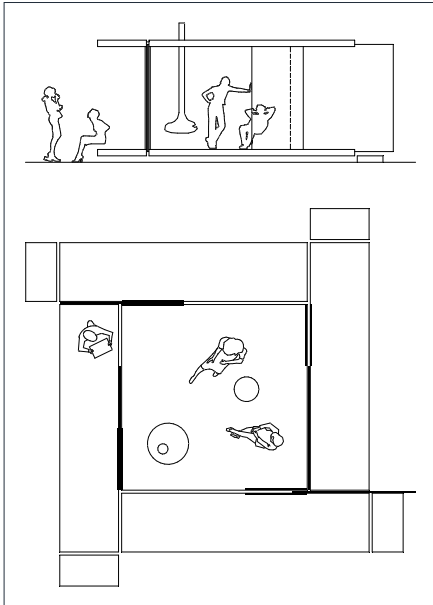
360-DEGREE PANORAMIC FREEDOM

Entirely made of glass. Completely connected with the outside or completely by itself. Nothing disturbs the view and nothing disturbs you. Right in the middle and still only present, if you want to. A very special place for very special moments. A unique feeling of freedom dipped into elegance.

As a glass pavilion in the traditional sense, the GM PAVILLON360 from Glas Marte is both a viewing point and a viewing attraction. It may look transparent and fragile but it can effortlessly withstand huge loads. Four pairs of windmill-style glass elements support the roof as a mirror image of the floor. No braces. No pillars. As pared-back as the sleekly elegant Design Pavilion seems, its design potentials are limitless. Each GM PAVILLON360 is a one-off and bears, as its serial number, the geographical coordinate of its location. On request the 360 symbol on the roof, on a high quality, weatherproof tarpaulin, can be recognised by Google Earth.



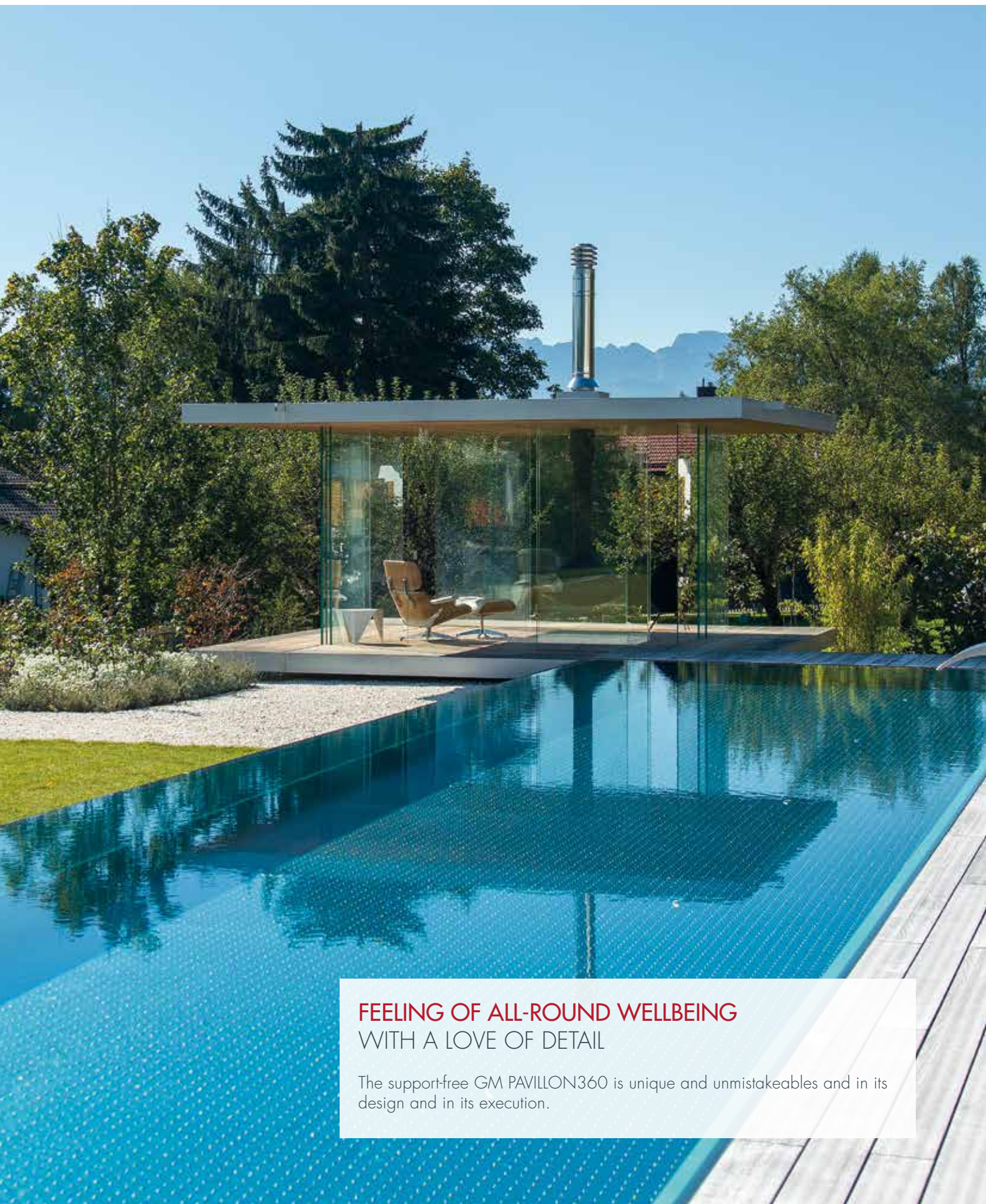
More information
on GM PAVILLON 360



TECHNISCHE DATEN

Floor area m	6 x 6 (ca. 36 m ²)
Interior (m)	3,5 x 3,5
Space height (m)	2,4
Spezifikationen	<ul style="list-style-type: none">» Self-supporting garden pavillon with four pair-wisely, windmill-type arranged glass elements» Four load-bearing glass wall panes with two elements of safety glass each, width 1,2 m» Floor substructure made of hot-dip galvanised steel, floating floor» Peripheral edge with hot-dip galvanised and black powder-coated flat steel band at floor and ceiling» Assembled on concrete foundation» Roof structure made of hot-dip galvanised steel» Roof soffit equivalent to flooring» Roof sealing with waterproof tarpaulin with 360 signet





FEELING OF ALL-ROUND WELLBEING WITH A LOVE OF DETAIL

The support-free GM PAVILLON360 is unique and unmistakable in its design and in its execution.



More information
on GM PAVILLON360



IPE/Lapacho



Massaranduba



Burma Teak



Safety glass, wall-on with anti-skid
screenprint





SUMMER AND WINTER

360°, 365 DAYS OF THE YEAR

Enjoy a view that is all your own – even in the winter. A choice of floor and roof elements and a selection of exclusive interior fittings, for example a lowerable refrigerator, leave nothing to be desired.

The GM PAVILLON360 can also be fitted with a suspended fireplace, making it an inviting and cosy oasis, even in the coldest months.



More information
on GM PAVILLON360





REFERENCES

INDIVIDUALITY IN GLASS

Fig. 1 (large image): GM PAVILLON360, Bad Tölz (D), with freely suspended, open design fireplace

Fig. 2 (image bottom left): Rendering for project Lake Constance

Fig. 3 (image top left): GM PAVILLON360 LIGHT, Lochau (A), with LSG-mirror soffit

