

GM SLIDING DOOR SYSTEMS
PRODUCT REPORT



TABLE OF CONTENTS

INTRODUCTION	P. 04
PRODUCT OVERVIEW	P. 06
APPLICATION	P. 08
HANDLES & GUIDES	P. 16
DESIGN VARIANTS/GLASS	P. 18

A photograph of a modern building with a glass facade, featuring large windows and glass railings. The building is set against a clear blue sky, and a tree is visible in the foreground on the left. A semi-transparent white box is overlaid on the right side of the image, containing text.

GLAS MARTE COMPANY PROFILE

Innovative development, competent advice, detailed planning and masterful execution – Glas Marte has it all.

Founded in 1930, the company has continually expanded its expertise of working with glass, a versatile building material, and today offers a wide range of products, from flat and insulating glass to a variety of surfaces, multi-award-winning sliding and holding systems as well as delicate glass partition wall systems all the way to DIBt-tested glass railings. Whether indoors or outdoors, in private or public buildings – the more complex the requirements, the more innovative and creative the concept, the more you are in good hands with Glas Marte.



Further information
on GM SLIDING DOOR SYSTEMS

GM SLIDING DOOR SYSTEMS – CONVINCING IN DETAIL

GM glass sliding doors offer design-oriented solutions for the planning of elegant interior architecture and sophisticated room design. The product range of the GM SLIDING DOOR SYSTEMS with the various series meets every requirement for modern interior glass applications. Apart from the wide range of variants and the installer-friendly advantages of the individual series, it is above all Glas Marte's basic design principles that form the strong basis.

Central force transmission:

Through the consistent implementation of the «2 rollers – 2 running rails» principle, the forces from the sliding elements are always transmitted centrally into the load-bearing running rail. Through the homogeneous transmission of force into the running unit and the optimal load distribution, GM SLIDING DOOR SYSTEMS are extremely durable.

Stainless steel ball bearings:

Despite the high weight of the glass, GM SLIDING DOOR SYSTEMS are characterised by extremely smooth running and pleasantly low operating forces. The high-quality GM stainless steel ball bearings are permanently protected against corrosion, polished on the running surfaces, lubricated ex works and thus able to meet the usage requirements over many years.

Running rails:

The running rails were also developed with our eye for small details. The convex running surfaces ensure perfect contact with the matching rollers at all times. Dust and dirt cannot collect in the running rail – the ideal prerequisite for the smooth running and durability of all moving parts of the GM SLIDING DOOR SYSTEMS.

ADVANTAGES OF THE GM SLIDING DOOR SYSTEMS

- » **CENTRAL BEARING**
gentle on the material and easy to assemble
- » **STAINLESS STEEL BALL BEARINGS**
protected against corrosion, polished, lubricated
- » **RUNNING RAILS**
maintenance-free and comfortable
- » **SUITABLE FOR TSG/LSG**
wide choice of glass



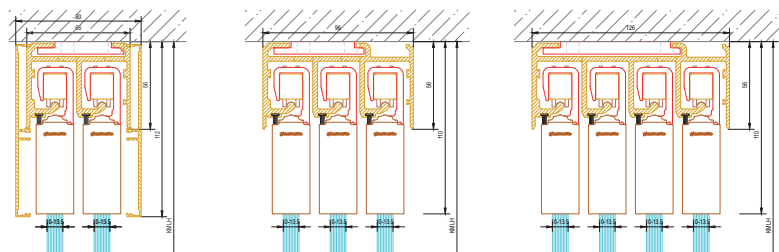
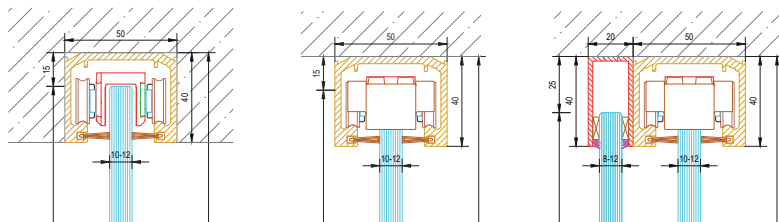
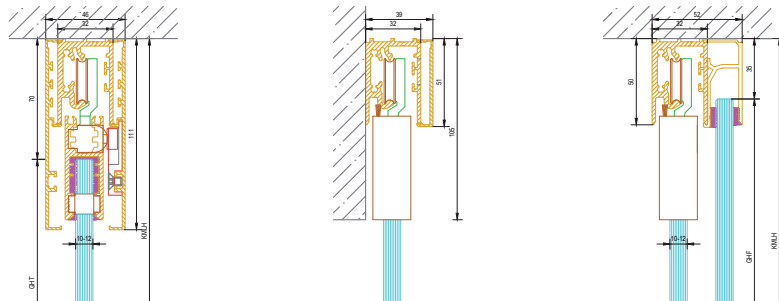
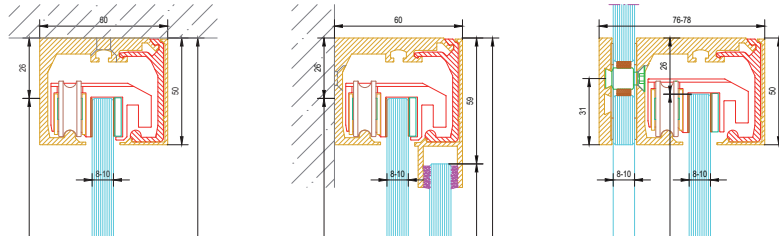


PRODUCT OVERVIEW

GM SLIDING DOOR SYSTEMS

INTERIOR	<p>GM TOPROLL® BALANCE</p> <p>Low overall height, many functions</p> <p>Door weight: max. 80 kg</p> <p>TSG 8 mm to LSG 10.2</p>
	<p>GM TOPROLL® 100</p> <p>For all installation situations in a wide variety of combinations</p> <p>Door weight: max. 80 kg</p> <p>TSG 8 mm to LSG 10.2</p>
	<p>GM TOPROLL® SMART</p> <p>Particularly low overall height, the glass sliding door can be fully integrated in the ceiling</p> <p>Door weight: max. 150 kg</p> <p>TSG 10 mm to LSG 12.2</p>
	<p>GM TOPROLL® 10/14</p> <p>Multi-leaf glass sliding door system without a threshold, barrier-free, each leaf collects the next</p> <p>Door weight: max. 100 kg per sliding element</p> <p>TSG 10 mm to LSG 12.4</p>

ASSEMBLY VARIANTS

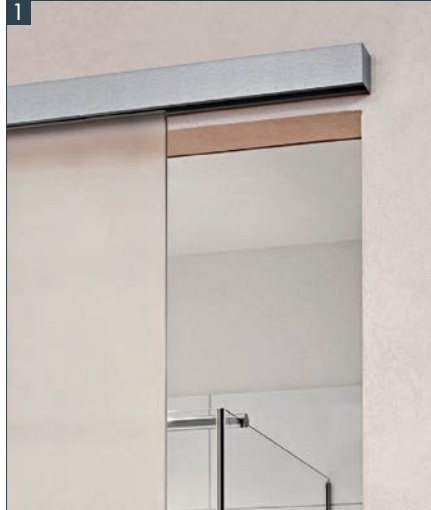




Further information
on GM SLIDING DOOR SYSTEMS

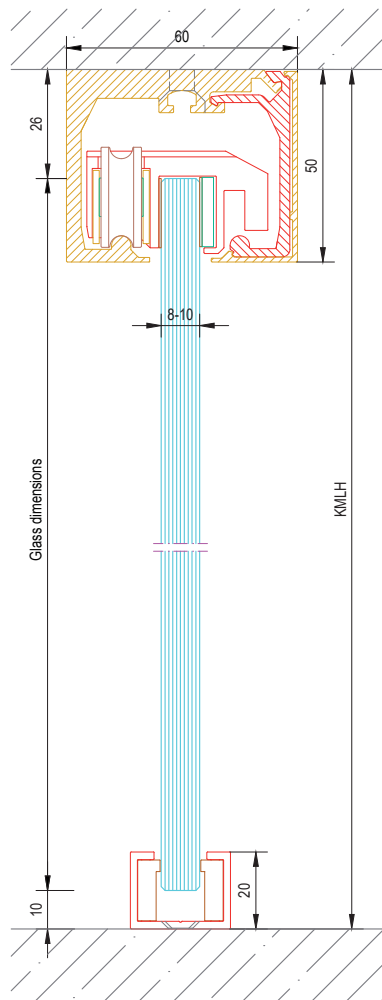
SPECIAL ADVANTAGES

- » low profile height
- » high flexibility of the installation options
- » simple installation in wall niches (pocket installation)
- » sliding element without glass processing



1 GLASS DESIGN | 2 VERTICAL SECTION

2





GM TOPROLL® BALANCE

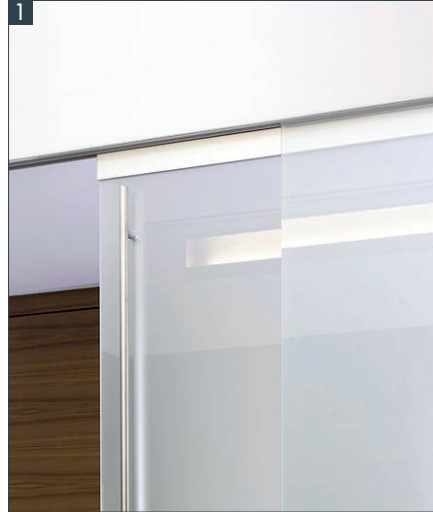
Thanks to the combination with the «Softstop» closing function, GM TOPROLL® BALANCE is extremely comfortable to use. A further advantage of GM TOPROLL® BALANCE is the design of the running rail and the matching running unit. The simple assembly, the matching runner and the easily mounted glass sliding element make GM TOPROLL® BALANCE an extremely user-friendly system from planning to application.



Further information
on GM SLIDING DOOR SYSTEMS

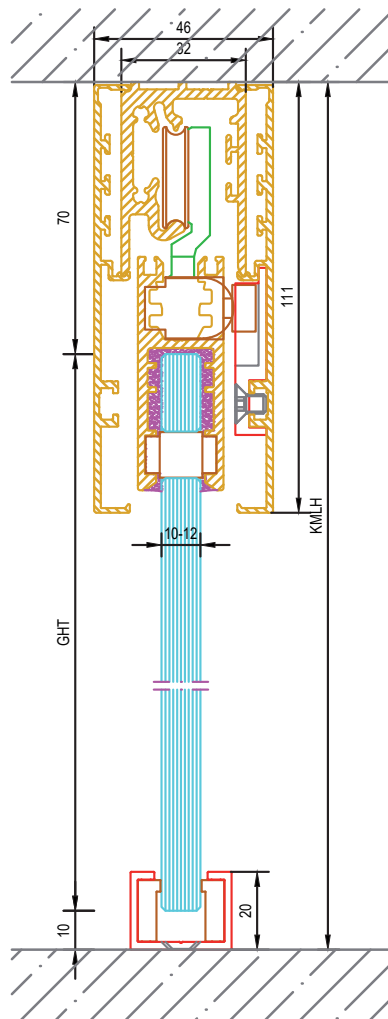
SPECIAL ADVANTAGES

- » high flexibility of the installation options
- » combinable with fixed glazing
- » secure glass support through mechanical securing and bonding



1 GLASS DESIGN | 2 VERTICAL SECTION

2





GM TOPROLL® 100

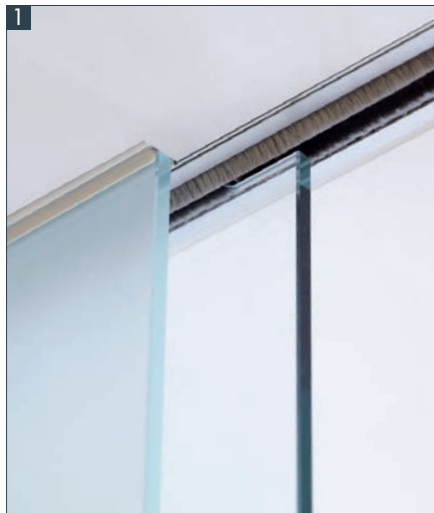
The GM TOPROLL® 100 sliding door system impresses with a large variety of installation options. Irrespective of the building situation, the system can always be installed without problems. Apart from mounting on walls and ceilings, planners and fitters also have the option of a combination with fixed glazing.



Further information
on GM SLIDING DOOR SYSTEMS

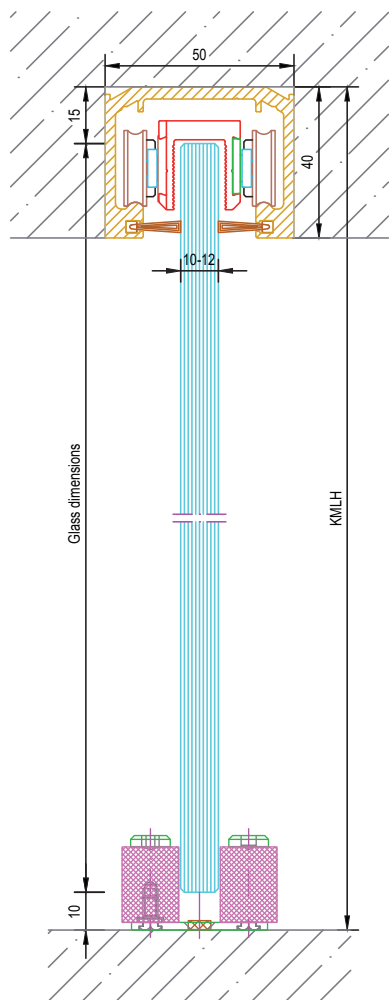
SPECIAL ADVANTAGES

- » extremely low profile height (40 mm), ideal for flush installation, can be integrated perfectly in ceiling constructions
- » maximum door weight 150 kg
- » suitable for TSG and LSG



1 GLASS DESIGN | 2 VERTICAL SECTION

2





GM TOPROLL® SMART

With a 40 mm profile height of the running rail, GM TOPROLL® SMART is the most elegant design-oriented sliding door system for room design and optimally showcases glass as a material. The delicate running rail also offers advantages in the case of flush-with-the-ceiling installations. Even if little space is available in concrete ceiling slots, in timber construction or when renovating, the complete system can be integrated perfectly in the ceiling construction on account of its low height.



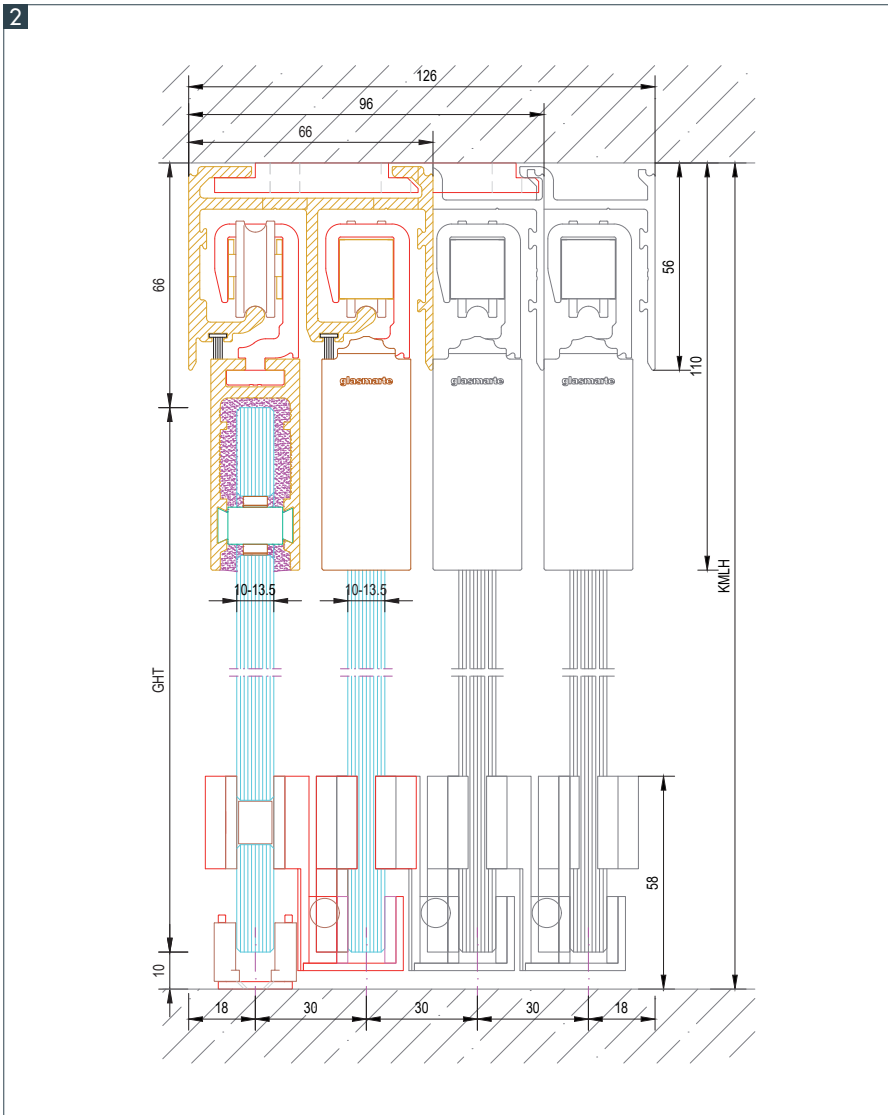
Further information
on GM SLIDING DOOR SYSTEMS

SPECIAL ADVANTAGES

- » barrier-free passage
- » no threshold, each leaf collects the next
- » generously sized openings for light-flooded interiors
- » multi-leaf systems with up to 4 sliding elements



1 GLASS DESIGN | 2 VERTICAL SECTION





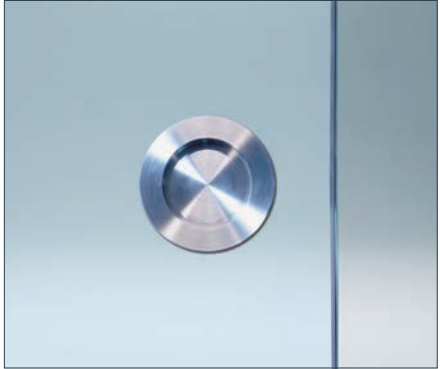
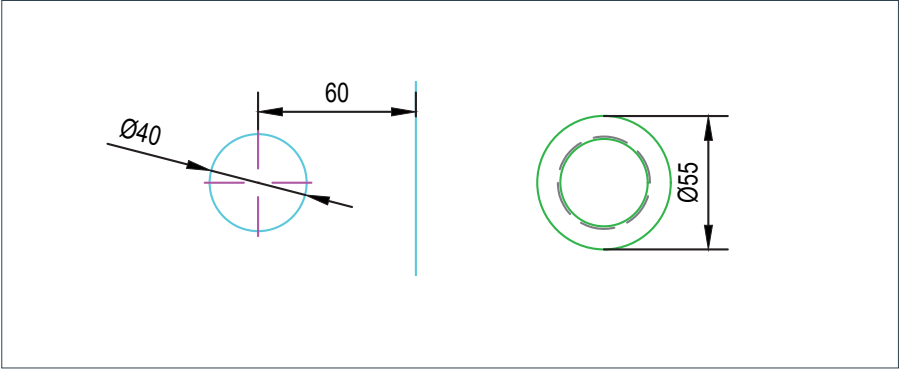
GM TOPROLL® 10/14

The GM TOPROLL® 10/14 multi-leaf sliding door system impresses with the various opening variants. Passage widths up to 75% can be achieved with the barrier-free system. Flexible room concepts are very easy to implement in this way, especially if large openings are desired.

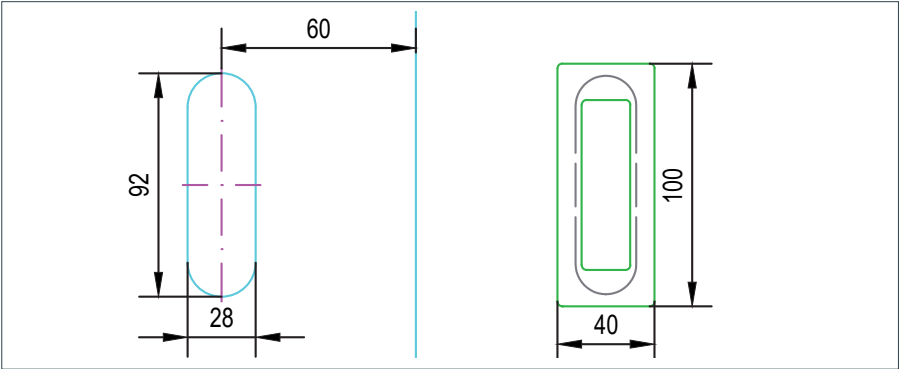
PRODUCT OVERVIEW

HANDLES

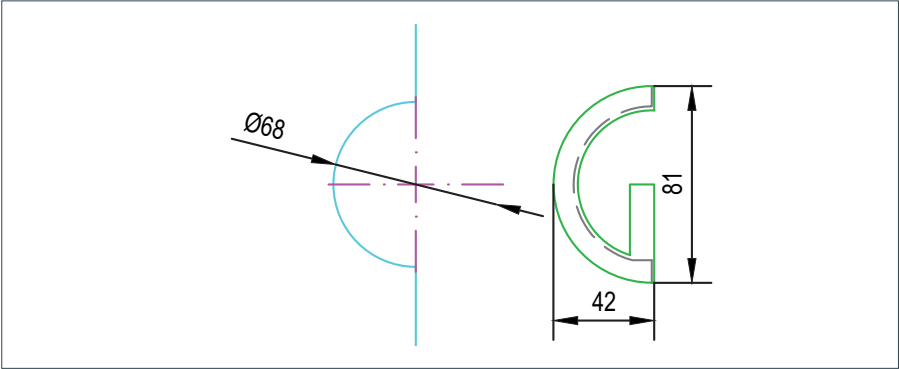
GM SHELL HANDLE (ROUND)



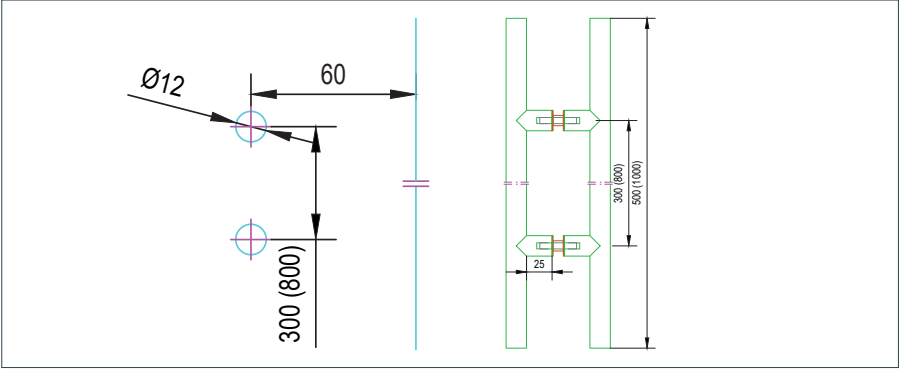
GM SHELL HANDLE (RECTANGULAR)



GM G-HANDLE

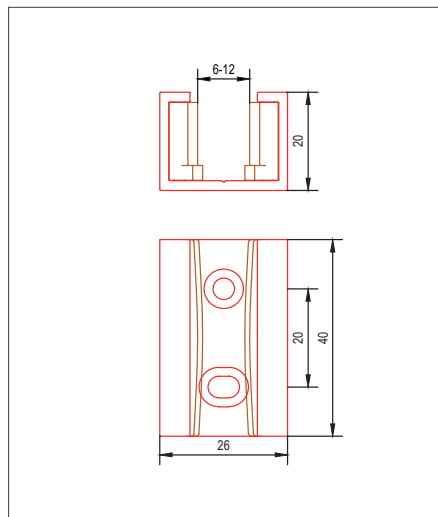


GM BAR HANDLE

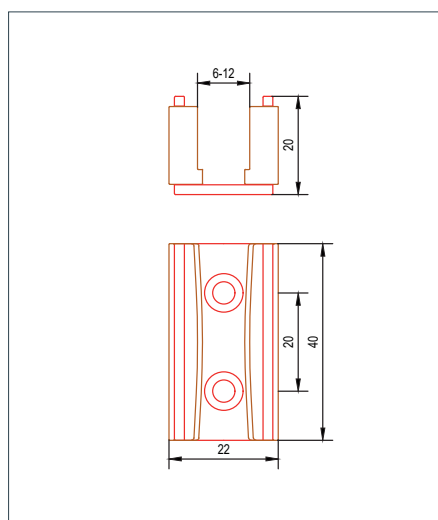


PRODUCT OVERVIEW GUIDES

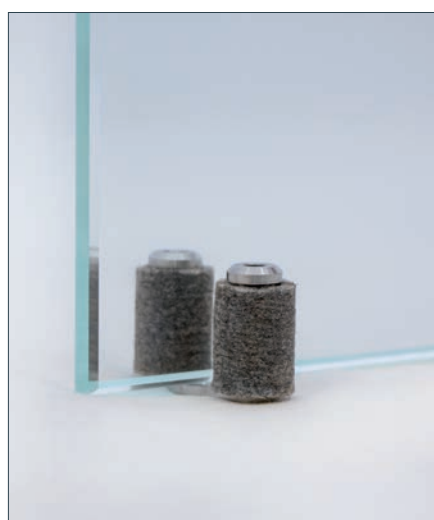
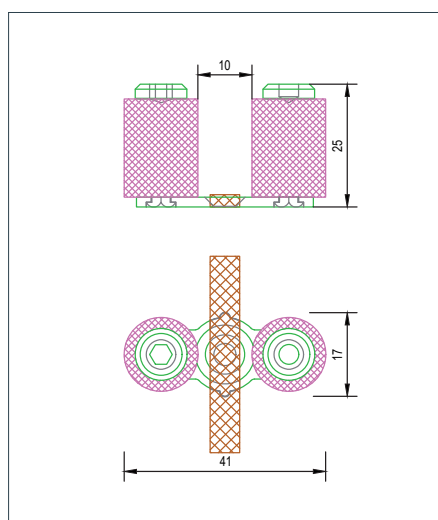
GM LOCAL GUIDE (20/26/20)



GM LOCAL GUIDE (20/22/20)

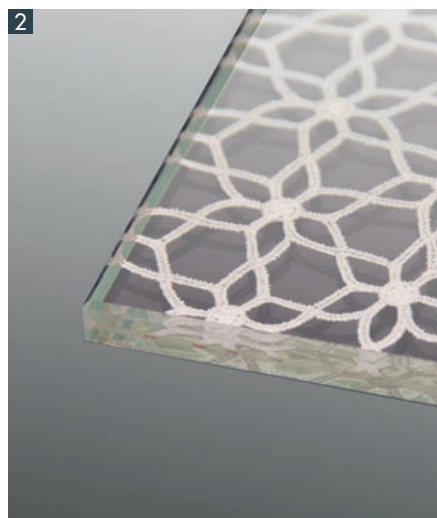


GM PIN WITH FELT





Further information
on GM SLIDING DOOR SYSTEMS



1 GM ICE-H® | 2 GM LAMIMARTEX | 3 GM SATINATO® | 4 GM PRINTMART®





SURFACE FINISHING

UNIQUE EFFECT

Glass can be as smooth as a mirror. But it doesn't have to be. Glas Marte has developed and continues to develop various surface treatment options – from high-quality sandblast engraving and various types of printing through to structured glass or the integration of fine embroidery into the glass.

